

# SD20-C6

**SHANTUI**  
VALUE THAT WORKS

BULLDOZER  
SERIES

ENGINE MODEL	WEICHAI WP12
GROSS POWER	162KW(217HP)@1950rpm
OPERATING WEIGHT	21000KG

LET'S MAKE  
CONSTRUCTION EASIER



SHANTUI CONSTRUCTION MACHINERY CO., LTD.  
ADDRESS: No. 58, G327 Highway Jining City, Shandong, CHINA  
TEL: +86-537-2909369 FAX: +86-537-2311219  
EMAIL: trade@shantui.com WEB: www.shantui.com



[www.shantui.com](http://www.shantui.com)

# SD20-C6 TECHNICAL PARAMETERS

## BULLDOZER SERIES

**SHANTUI**  
VALUE THAT WORKS

ENGINE	
Engine	WEICHAI WD12
Emission	China-III
Rated revolution	1950rpm
Gross power	162kW(217hp) @1950rpm
Net power	149kW(200hp) @1950rpm
Number of cylinder-borexstroke	6-126mm*155mm
Displacement	11.596L
Max. torque	1100N.m @1200-1400rpm
Cooling system	Mechanic fan

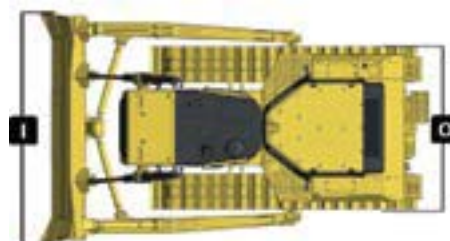
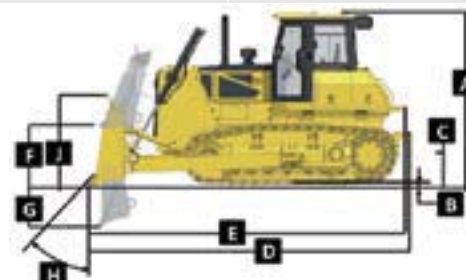
DRIVE SYSTEM	
Drive system	Mono-lever control of travel, speed and steering, work flexibly, high efficiency, easy for maintenance.
System overflow pressure	3.3MPa
Traveling speed	Forward 0~3.9km/h/ 0~6.8km/h/ 0~10.6km/h Backward 0~5.0km/h/ 0~8.6km/h/ 0~13.4km/h
Max. theoretical traction force	308.7kN
Torque converter	3-element, 1-stage, 1-phase
Transmission	Planetary gear, multiple-disc clutch, hydraulically actuated and force-lubricated
Steering clutch	Wet, multiple-disc steering clutches are spring-actuated loaded and hydraulically released.
Brake clutch	Wet, multiple-disc brakes are spring-actuated and hydraulically released.
Final drive	Primary spur gear + primary planetary reduction


CHASSIS SYSTEM	
Type	Oscillation with equalizer bar and forward mounted pivot shafts
Track shoe type	Single grouser
Track gauge	1880mm
Width of track shoe	560mm
Track grounding length	2675mm
Track grounding area	34045cm <sup>2</sup>
Number of track shoe	39pcs/single side
Grounding pressure (standard configuration)	60.5kPa
Number of carrier roller	2pcs/single side
Number of track roller	7pcs/side
Pitch	203mm

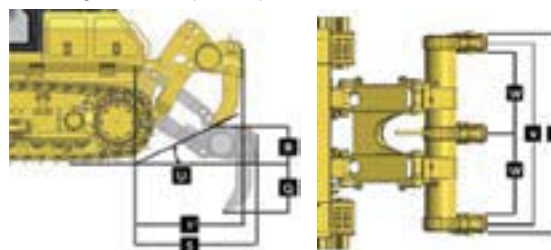
VOLUME	
Fuel capacity	395L
Coolant liquid capacity	65L
Engine oil capacity	24L
Hydraulic oil tank (travel)	75L
Hydraulic oil tank (work)	62L
Final drive	27L/single side


OPERATING WEIGHT	
Operating weight (standard)	21000kg (3 shanks ripper)

BLADE	
Blade type	Semi-U
Blade capacity	5.6m <sup>3</sup>



	DIMENSION	
A	Machine height (without ROPS)	3254mm
B	Track grouser height	65mm
C	Ground clearance	380mm
D	Machine length (without draw bar)	5395mm
E	Machine length (with draw bar)	5395mm
F	Max. lifting height of blade	1050mm
G	Max. digging depth of blade	450mm
H	Digging angle of blade	52°
I	Blade width	3460mm
J	Blade height	1490mm
O	Width from end of left track shoe to end of right track shoe (standard)	2440mm



	PARAMETER OF RIPPER (Three-shank ripper: 1752kg)	
Q	Max. ripping depth	595mm
R	Max. lifting height	540mm
S	Ripper length (at deepest ripping)	1783mm
T	Ripper width	2080mm
U	Departure angle (at highest lifting)	32.1°
V	Ripping width	1900mm
W	Distance between ripper teeth	950mm